

**CALIFORNIA COASTAL COMMISSION**

455 MARKET ST, SUITE 300  
SAN FRANCISCO, CA 94105  
(415) 904-5200



# W17b

**SLT-NOID-0003-23**

**(Hearst Ranch Forest Health Project)**

**May 19, 2023**

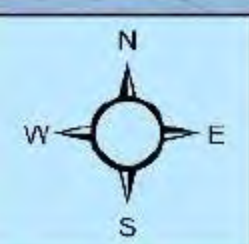
**EXHIBITS**

## **Table of Contents**

**Exhibit 1 – Regional Project Vicinity Map**

**Exhibit 2 – Vegetation Types Maps**

**Exhibit 3 – Project Treatment Units Maps**

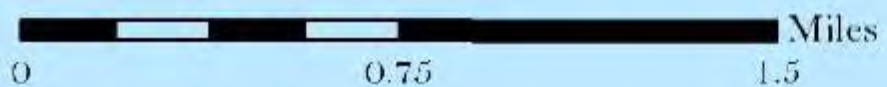


**Hearst Ranch Forest Health Fuels Reduction Project**  
 San Simeon Point | Pico Creek Monterey Pine Stand

- Project Boundary
- Class III Watercourse

Basemap provided by  
 National Geographic Society, 2013

Map Scale 1:30,000

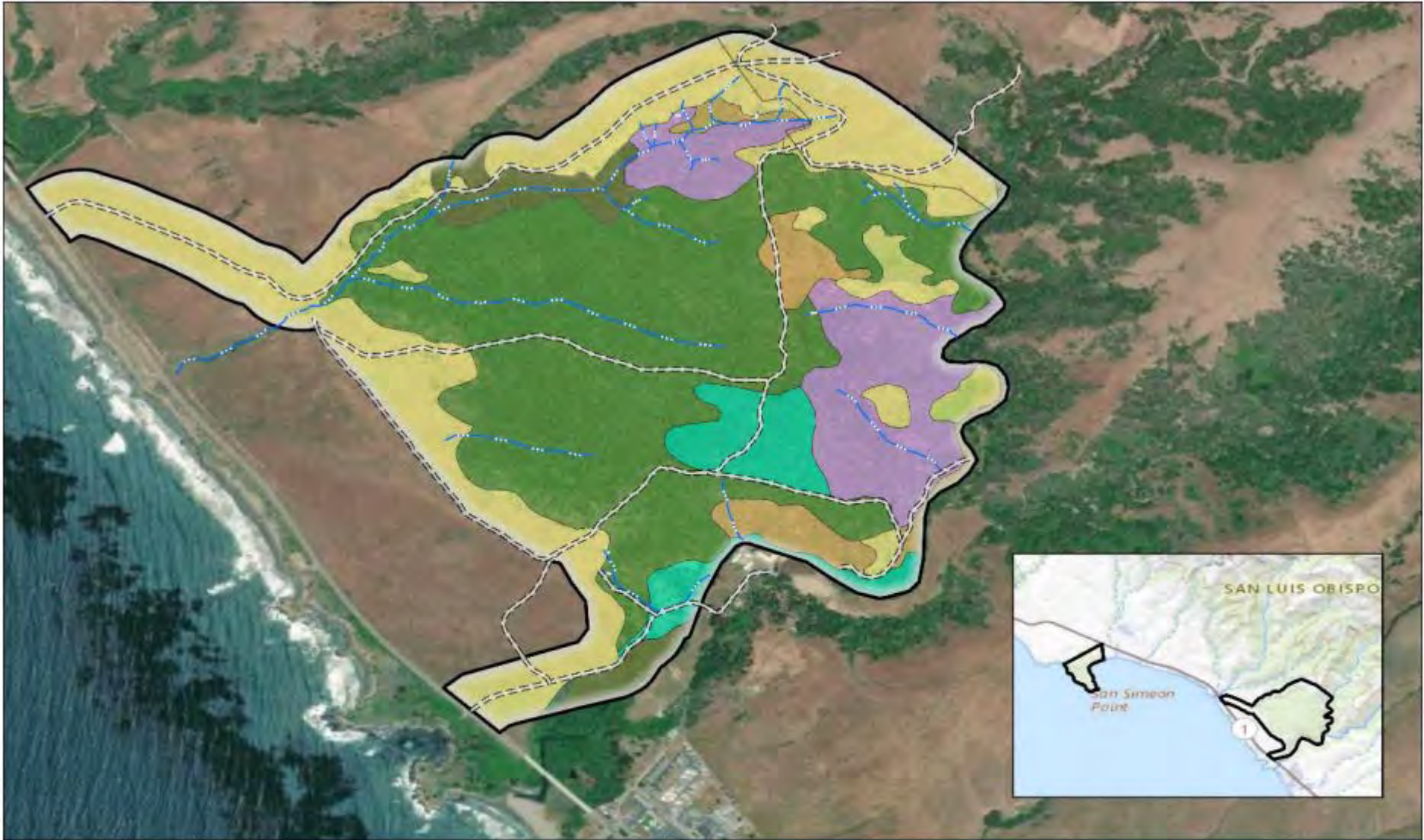


**Exhibit 1**  
**SLT-NOID-0003-23**





	<p><b>Hearst Ranch Forest Health Fuels Reduction Project</b>          San Simeon Point, Old San Simeon Village          Vegetation Type</p>	<p>▭ Project Boundary          - - - Trails</p>	<p><b>Vegetation Type</b>          ■ Annual Grassland          ■ Coastal Scrub          ■ Closed-Cone Pine-Cypress</p>	<p>▭ Coastline          ■ Eucalyptus          ■ Urban</p>
	<p>Map Scale 1:9,000</p> <p>Miles</p>	<p>Vegetation Types developed from CAL FIRE FRAP data, aerial imagery, and in-field surveys</p> <p><b>Exhibit 2</b>  <b>SLT-NOID-0003-23</b></p>		



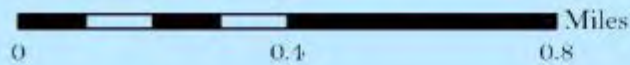
**Hearst Ranch Forest Health Fuels Reduction Project**  
 Pico Creek Monterey Pine Stand, New San Simeon  
 Vegetation Type

- Project Boundary
- Hearst Roads
- Class III Watercourse

- Vegetation Type**
- Annual Grassland
  - Closed-Cone Pine-Cypress
  - Coastal Scrub
  - Hardwood-Conifer
  - Hardwood/Oak Woodland
  - Hardwood/Riparian



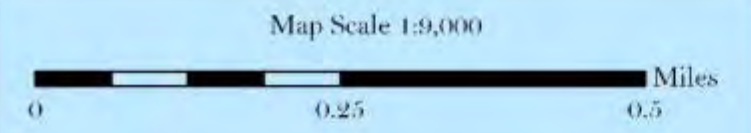
Map Scale 1:16,000



Vegetation Types developed from CAL FIRE FRAP data, aerial imagery, and in-field surveys

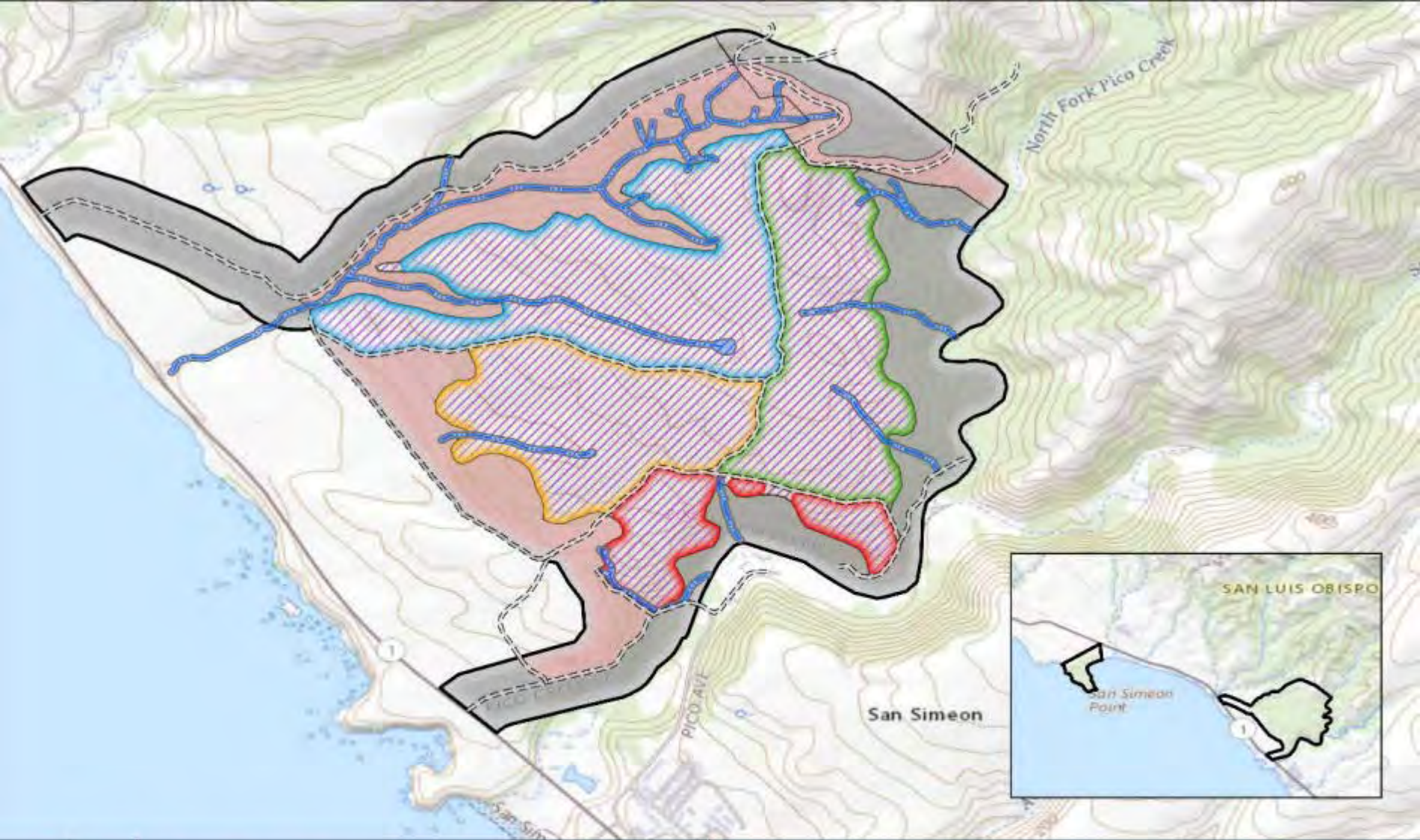


**Hearst Ranch Forest Health Fuels Reduction Project**  
 San Simeon Point, Old San Simeon Village  
 Treatment Unit



- Project Boundary
- Hearst Roads
- Trails
- Equipment Access/Rx Burn
- Mechanical/Manual/Rx Burn
- No Direct Treatment

- SSP1 (5.4 ac)
- SSP2 (22.2 ac)
- SSP3 (25.1 ac)
- SSP4 (26.4 ac)



**Hearst Ranch Forest Health Fuels Reduction Project**  
 Pico Creek Monterey Pine Stand, New San Simeon  
 Treatment Unit

- Project Boundary
- Hearst Roads
- Class III Watercourse
- Class III EEZ

- Equipment Access/Rx Burn
- Mechanical/Manual/Rx Burn
- No Direct Treatment

- PC1 (33.3 ac)
- PC2 (73.1 ac)
- PC3 (81.1 ac)
- PC4 (114.5 ac)

Map Scale 1:16,000

